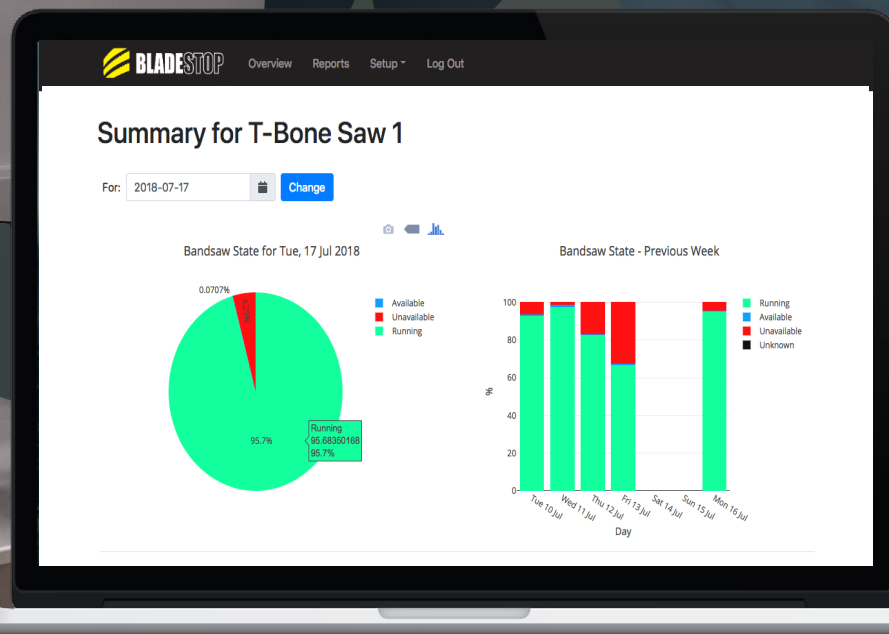


UPGRADE NOW TO

BLADESTOP CONNECT

FOR REALTIME DATA

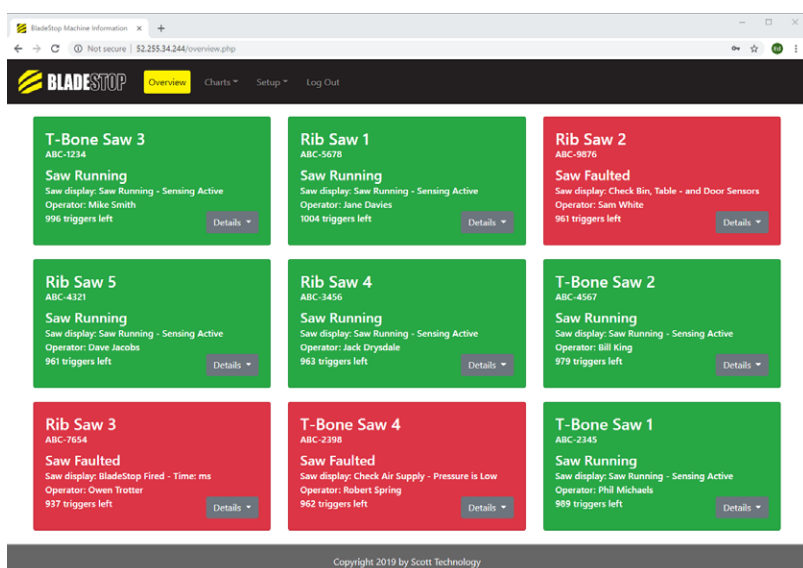


BladeStop Bandsaws equipped with Bladestop Connect gives real time and historical data showing productivity and event information. Data is easily accessed from any local intranet connected device.

BLADESTOP CONNECT

BladeStop Connect is available for both previously installed and new BladeStop systems and is configured with unique individual operator log-in's for detailed shift reporting. A data logger system in each bandsaw captures real time data which can be accessed through a central server. Data from all connected saws are displayed in a web application and offer critical system information such as:

- Overview of Bandsaw status
- Operator hours/access (using RFID)
- BladeStop and/or GloveCheck triggers
- Bandsaw faults, warnings and other events
- Saw utilization information
- Saw run hours
- Saw maintenance details
- Operation and maintenance manuals



REQUIREMENTS

- BladeStop bandsaws equipped with BladeStop Connect and RFID reader
- Network connection to BladeStop saws
- Central server - either as dedicated hardware or installing a virtual machine on suitable existing hardware

The BladeStop connect web application is accessed via a web browser. Once logged in the user will have access to several pages providing data on their saws.

